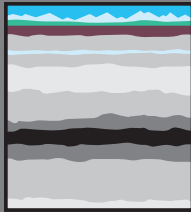


COAL

COMMERCIAL MINING IN CANADA DATES BACK TO THE EARLY 1800S.



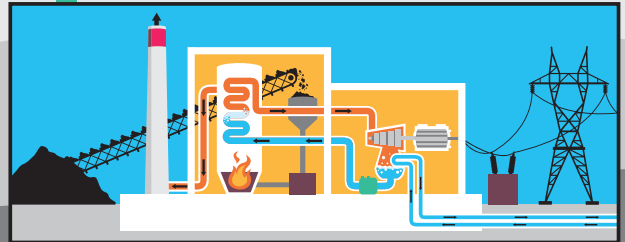
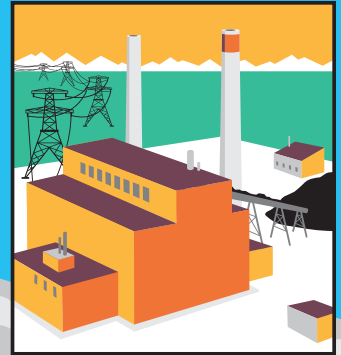
LIKE OIL SANDS MINING, COAL CAN BE STRIPPED FROM THE SURFACE OF THE EARTH BY MACHINE, CALLED STRIP-MINING...



...OR DUG UP BY MINERS WHO BLAST AND BURROW DEEP UNDERGROUND INTO BURIED COAL DEPOSITS OR "SEAMS."



ONCE OUT OF THE GROUND, COAL IS TAKEN TO A POWER PLANT WHERE IT IS BURNED TO HEAT WATER TO MAKE STEAM. THE PRESSURE CREATED BY THAT STEAM SPINS A TURBINE, WHICH IN TURN SPINS MAGNETS INSIDE A GENERATOR.



THIS GENERATOR CONVERTS THAT MECHANICAL ENERGY INTO THE KIND OF ELECTRICAL ENERGY WE USE EVERY DAY.

